



# GAT MONTHLY MEMBERSHIP PROGRESS REPORT

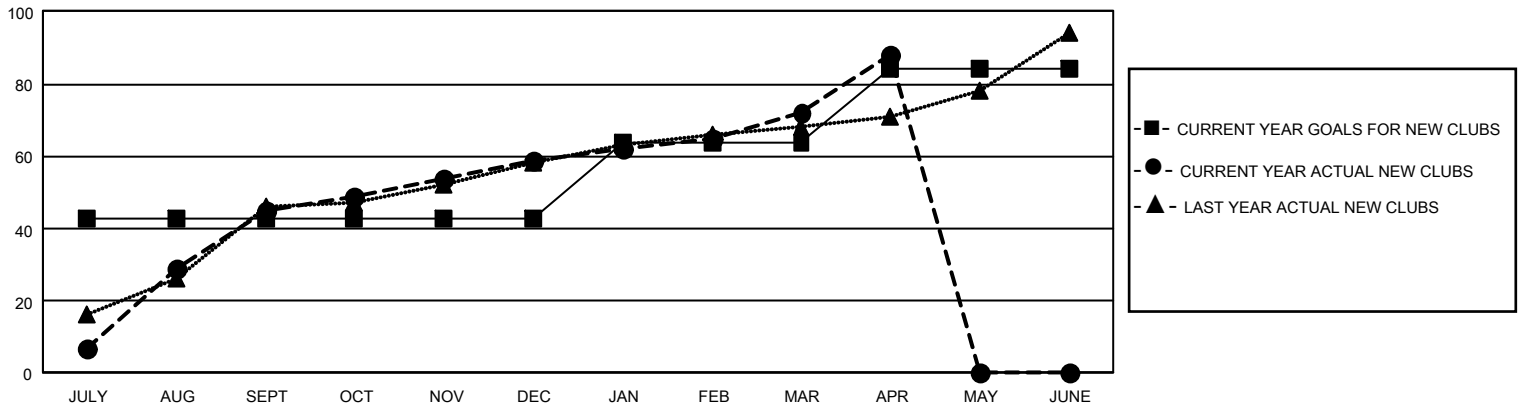
Results as of: 4/30/2025

## GMT Constitutional Area 6 - I, Group F

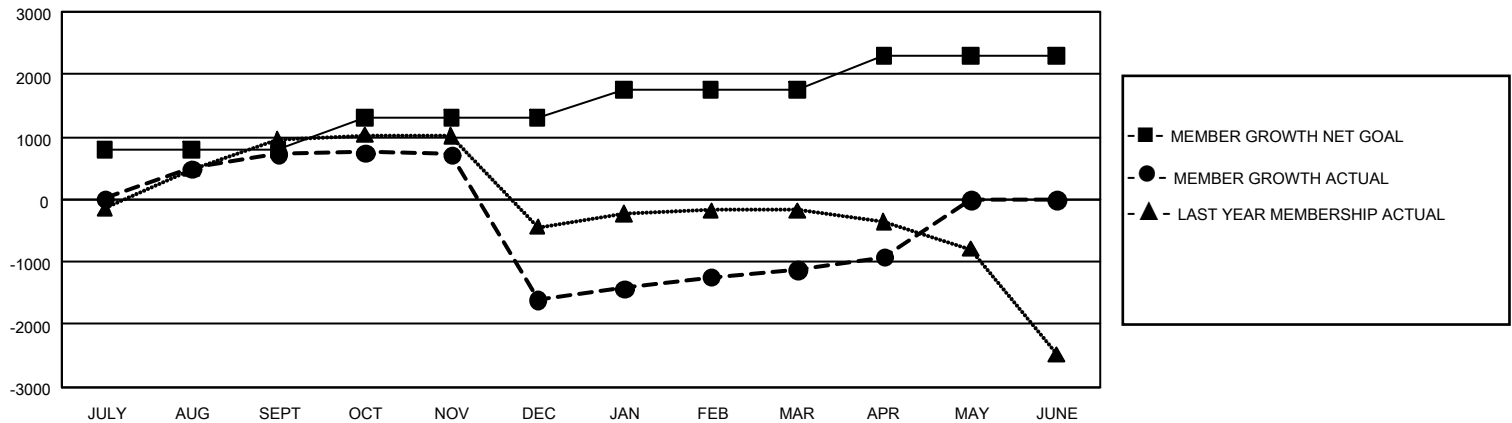
REPORT DOES NOT INCLUDE CLUBS IN UNDISTRICTED AREAS.

| Clubs                 |               |           |               | Members               |                        |                      |  |
|-----------------------|---------------|-----------|---------------|-----------------------|------------------------|----------------------|--|
| RESULTS FOR 2024-2025 |               |           |               | RESULTS FOR 2024-2025 |                        |                      |  |
| QUARTER               | NEW CLUB GOAL | NEW CLUBS | DROPPED CLUBS | QUARTER               | MEMBER GROWTH NET GOAL | MEMBER GROWTH ACTUAL | DROPPED MEMBERS ACTUAL (including transfers) |
| JULY/AUG/SEPT         | 129           | 45        | 12            | JULY/AUG/SEPT         | 790                    | 2,017                | 1,034  |
| OCT/NOV/DEC           | 0             | 14        | 108           | OCT/NOV/DEC           | 515                    | 1,083                | 3,324  |
| JAN/FEB/MAR           | 63            | 13        | 15            | JAN/FEB/MAR           | 442                    | 1,431                | 554  |
| APR/MAY/JUNE          | 60            | 16        | 0             | APR/MAY/JUNE          | 545                    | 614                  | 296  |

GOALS AND ACTUAL NEW CLUBS CUMULATIVE



GOALS AND ACTUAL MEMBERS CUMULATIVE



DROPPED CLUBS: 135

562 CLUBS OF 1,266 ADDED 1 OR MORE NEW MEMBERS

### GENDER DISTRIBUTION

|                      |                 |
|----------------------|-----------------|
| MALE                 | 21,743 (73.41%) |
| FEMALE               | 7,866 (26.56%)  |
| NON BINARY           | 0 (0.00%)       |
| PREFER NOT TO ANSWER | 10 (0.03%)      |

### DROPPED MEMBERS

|                |              |
|----------------|--------------|
| DECEASED       | 85           |
| CLUB CANCELLED | 2,037        |
| OTHER          | 3,074        |
| <b>TOTAL</b>   | <b>5,196</b> |

[CLICK HERE FOR CUMULATIVE MEMBERSHIP DATA](#)

TOTAL FAMILY UNIT MEMBERS 0

FAMILY MEMBERS PAYING HALF DUES 0